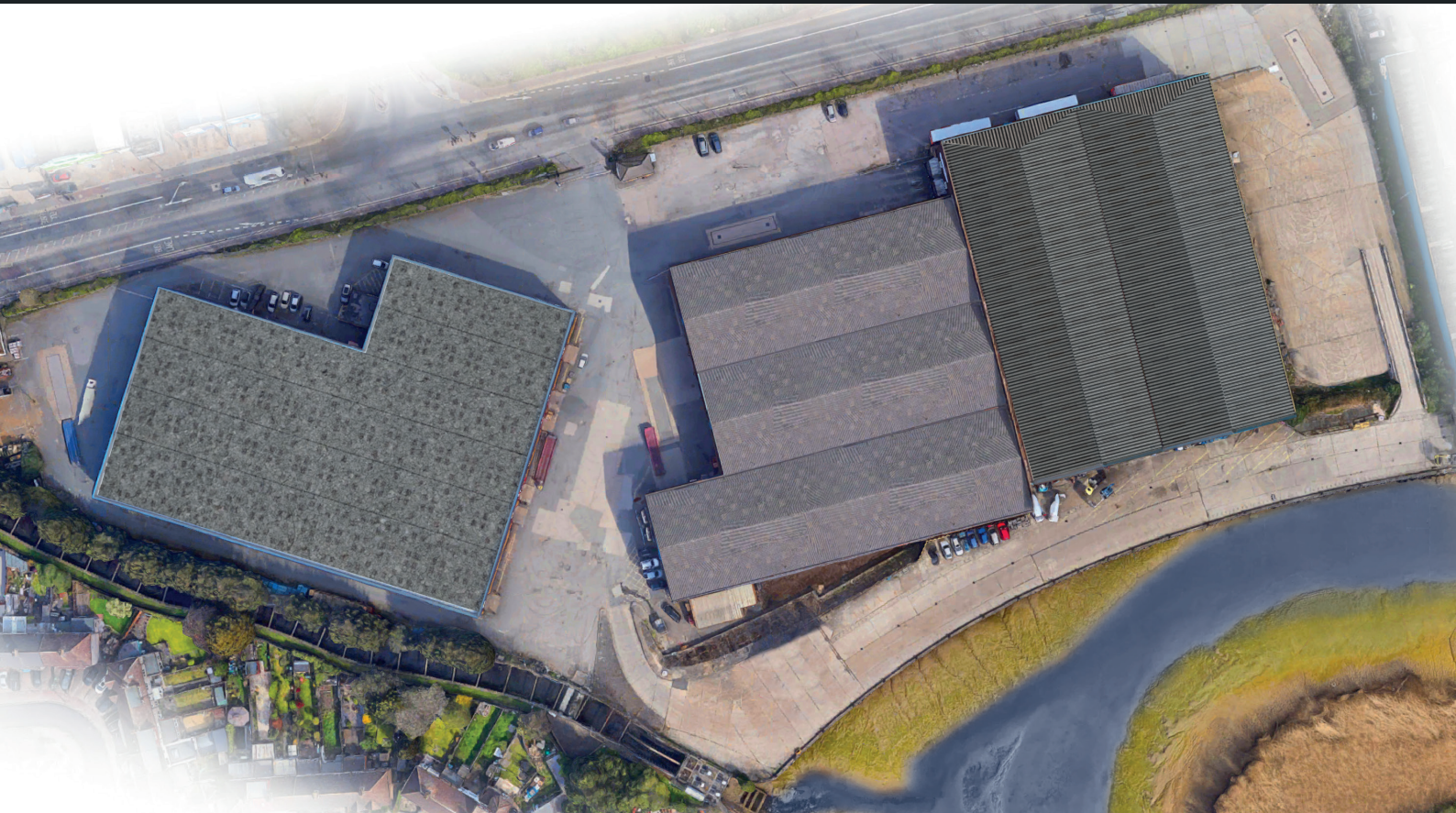


THE WHARF STUDIOS LONDON



FILM, TELEVISION AND MEDIA PRODUCTION STUDIOS

The Wharf Studios is a brand new production facility, located in the East London borough of Barking and Dagenham.

This newly created complex includes six, large scale stages, custom designed and acoustically treated, with full supporting infrastructure, including production offices, workshops, drive in access and parking.

All stages offer secure, self-contained usage, with private access. The generously proportioned site benefits from 360 degree vehicular access and includes back lot areas adjacent to the riverside location.

Flexible, adaptable and offering over 180,000sqft of creative space, the Wharf Studios London has been designed by industry professionals, to perfectly accommodate production at all levels.

The Wharf Studios London
River Road, Barking IG11 0DR



THE WHARF STUDIOS LONDON

SOUTH BUILDING

Stage 1

21,797sqft/2025m²

Height: 46ft/14m

Stage 2

21,937sqft/2030m²

Height: 46ft/14m

Stage 3

16,576sqft/1540m²

Height: 34ft/10.3m

Stage 4

16,770sqft/1557m²

Height: 34ft/10.3m

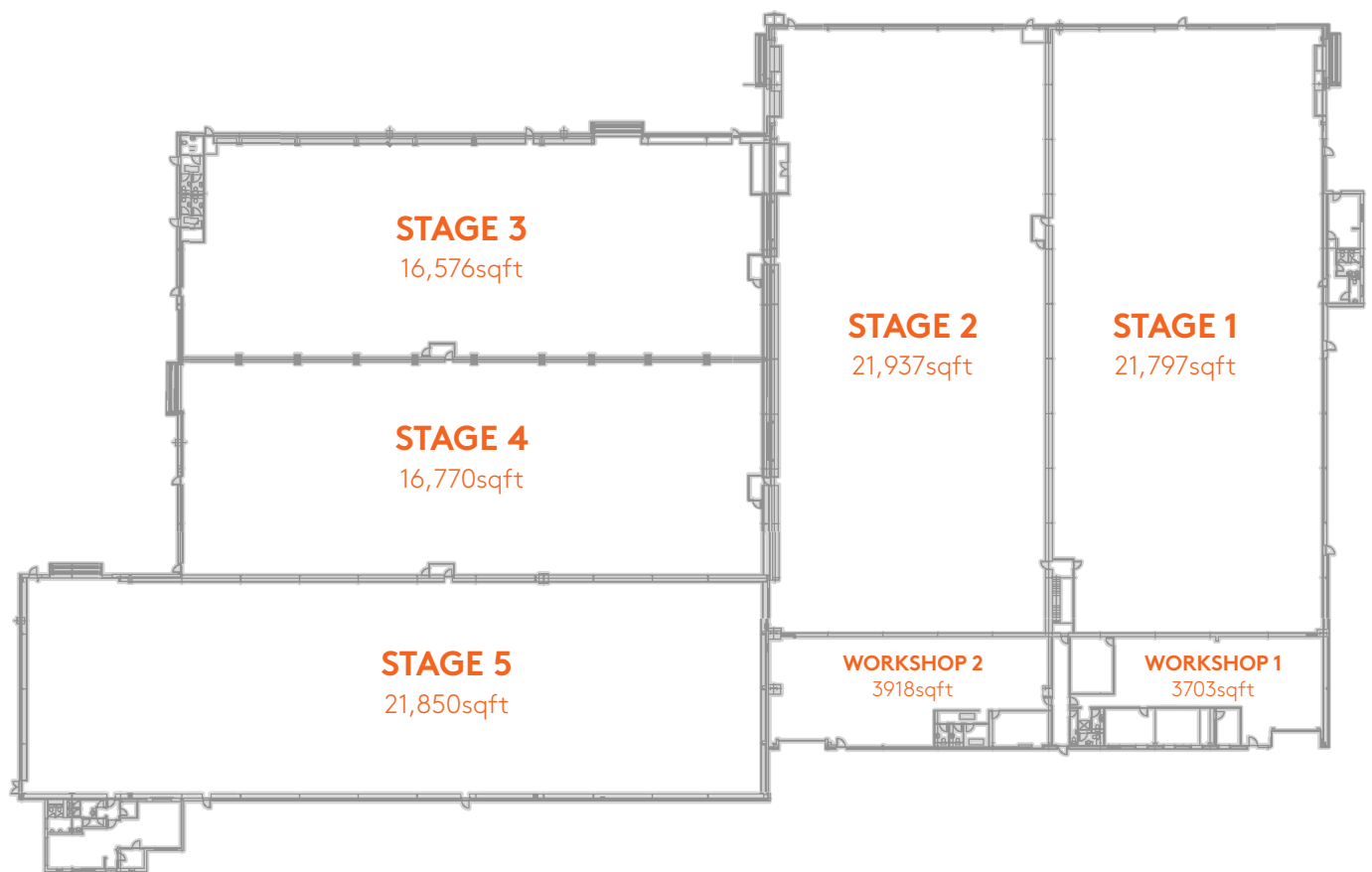
Stage 5

21,850sqft/2030m²

Height: 33ft/10m

Facilities/Amenities

Acoustically treated
Drive in Access 5m x 5m
Column free/open span stages
Restrooms
Breakrooms
Production offices
Green Room
Workshops
Hair & Make Up
Wardrobe
Laundry



THE WHARF STUDIOS LONDON

NORTH BUILDING

Stage 6

7,276 sqft/676m²

Height 26ft/8m

Workshop 3

15,142sqft/1406m²

Workshop 4

9353sqft/869m²

Workshop 5

2709sqft/251m²

Facilities/Amenities

Acoustically treated

Drive in Access 5m x 5m

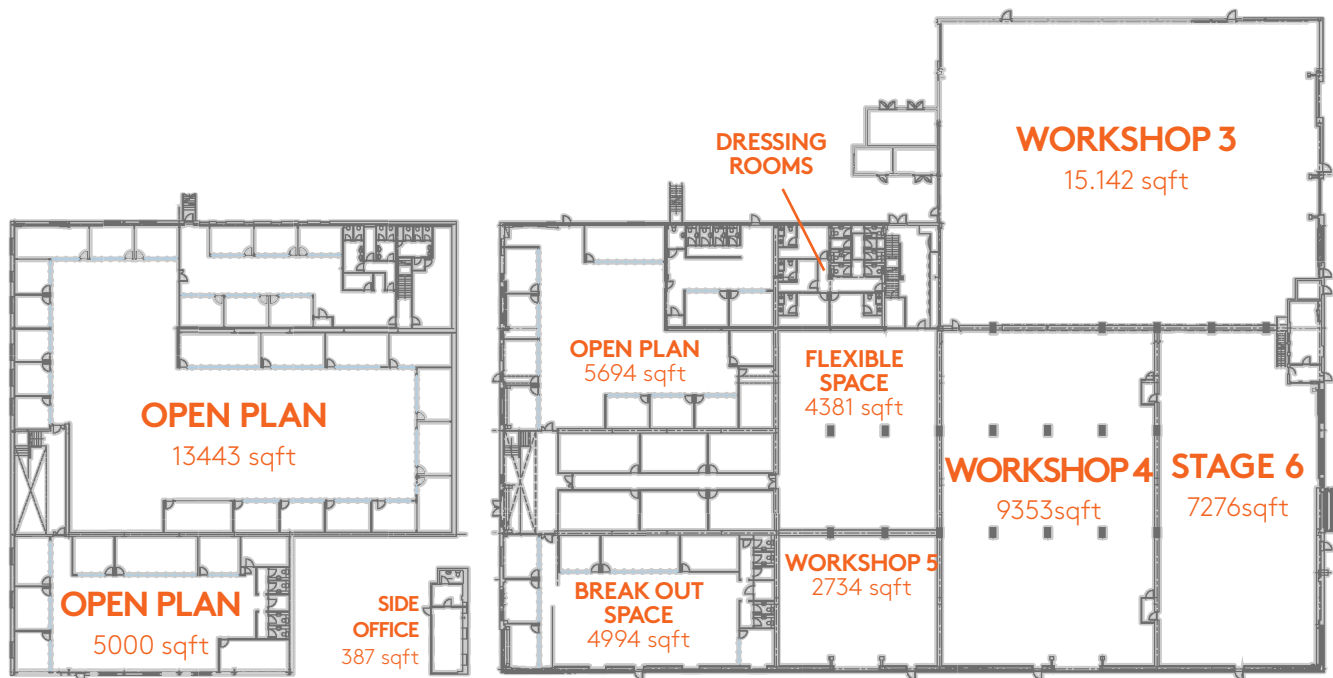
Column free/open span stages

Flexible Space

Restrooms

Breakrooms

Offices

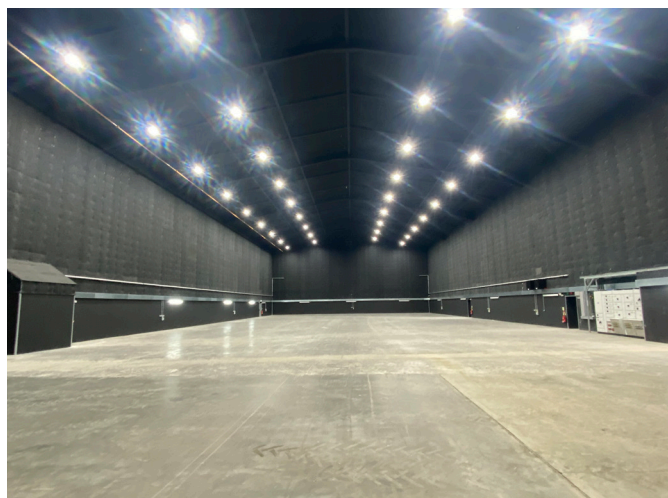


FIRST FLOOR
OFFICES

GROUND FLOOR
STAGE, OFFICES and
WORKSHOPS



THE WHARF STUDIOS LONDON

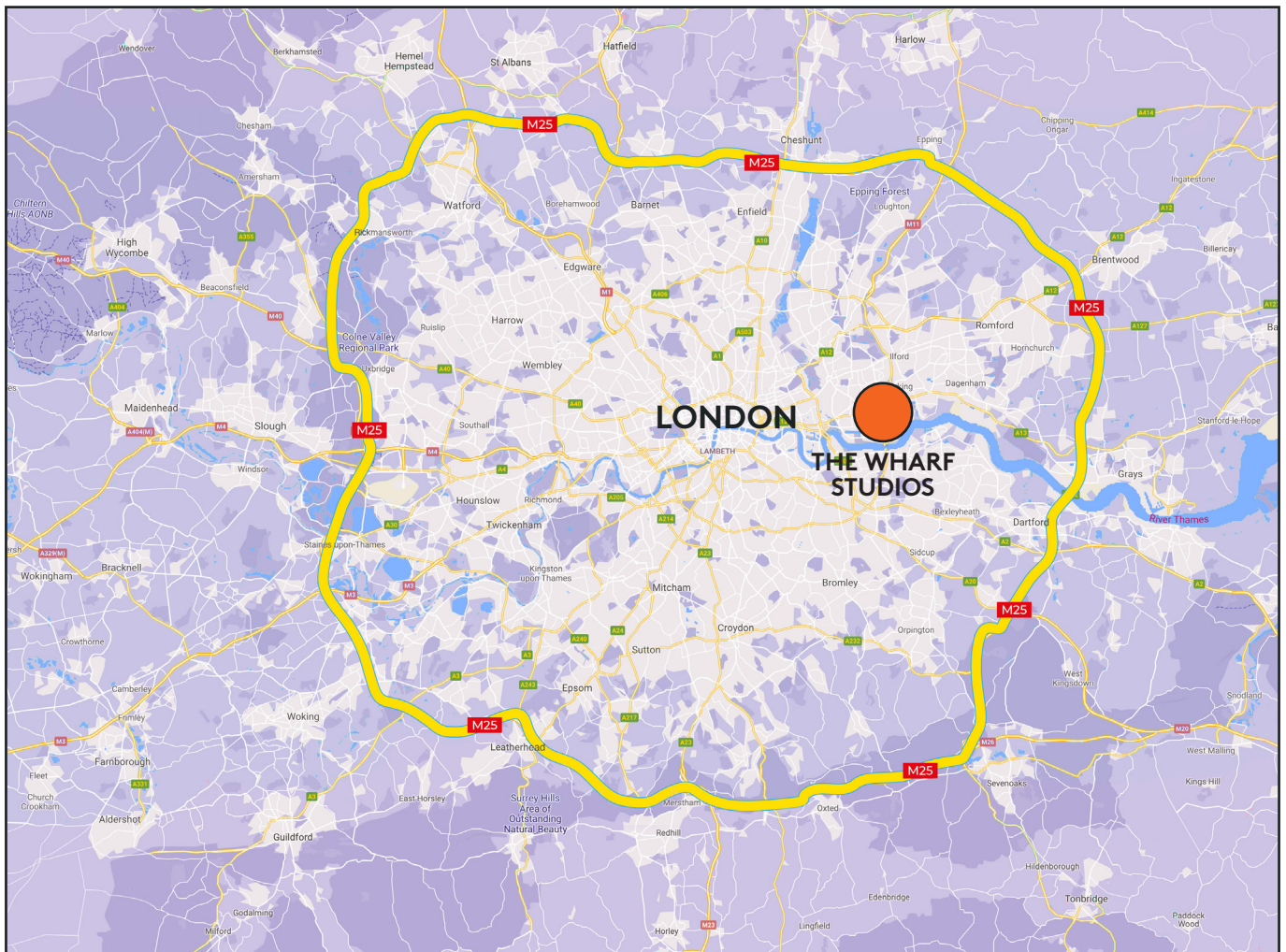


THE WHARF STUDIOS LONDON

LOCATION

The Wharf Studios : London

River Road, Barking Essex IG11 0DR



THE WHARF STUDIOS LONDON

LOCATION - TRANSPORT LINKS

The Wharf Studios : London is situated at Barking Riverside - just 22 minutes to Liverpool Street and 37 minutes to King's Cross by train, just over 15 minutes to London City Airport.

Massive investment in the area, includes a new station for 2022, which will add to the existing London Underground network. Travel time between Barking Riverside and Barking Station will be only 6 minutes, providing access to the c2c service into Fenchurch Street and the District line. Uber Boat by Thames Clippers will also deliver a riverboat service from Barking Riverside, providing a unique way to access Central London.

Barking Riverside has a 24-hour direct bus service into Barking Town Centre and Barking Station (20-25 minutes during peak times). Barking Station is served by the London Underground District and Hammersmith & City lines, London Overground and the c2c rail service which connects Essex with the City of London. Buses EL1, EL2 and EL3 provide direct links between The Wharf Studios : London and Barking Town Centre.

Taxis are widely available in the area.

The area also has excellent road links to the M25 London orbital motorway, as well as direct routes in to the centre of London. The Wharf Studios : London has ample, secure parking available.

