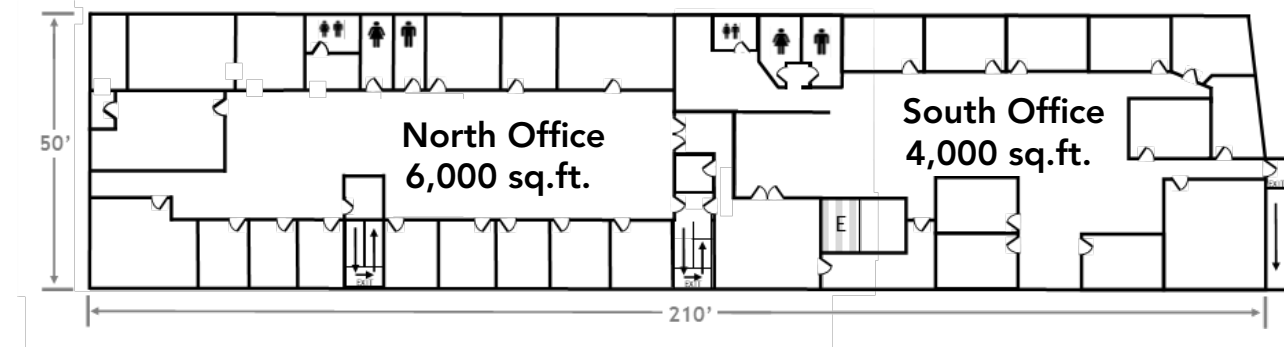
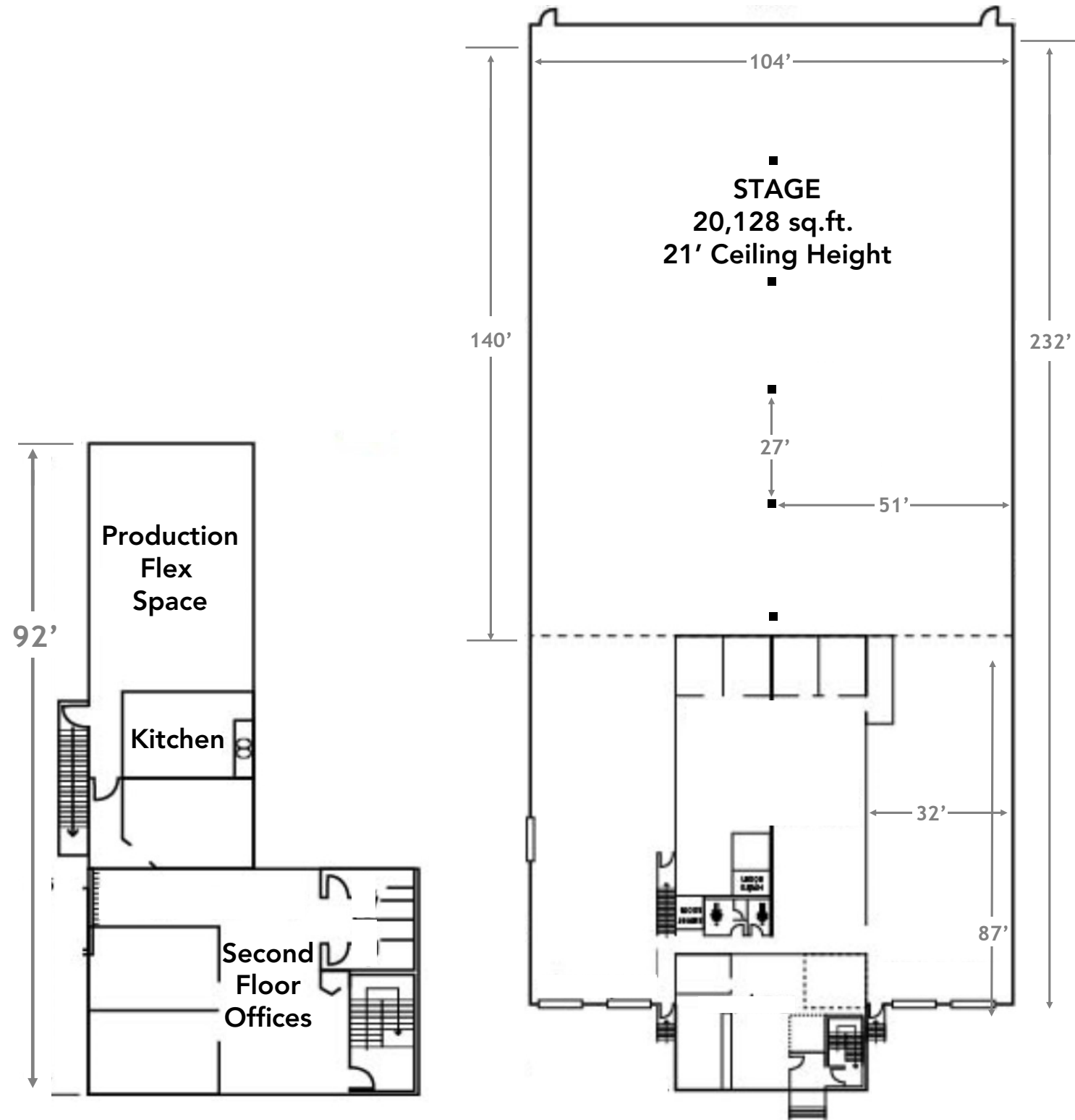


McCONNELL STUDIOS I

4082/4084 McConnell Court
Burnaby, BC V5A 3L8



4084 McConnell
Offices



37,803 SQ. FT. TOTAL

- Stage Space: 20,128 sq. ft.
- Offices: 10,000 sq. ft.
- Support Space: 7,675 sq. ft.
- 1 Grade Loading Bay
- 4 Raised Loading Bays
- Power: 400 amp / 600 volts
- Bell & Light System
- 2 Electrical Vehicle Chargers**