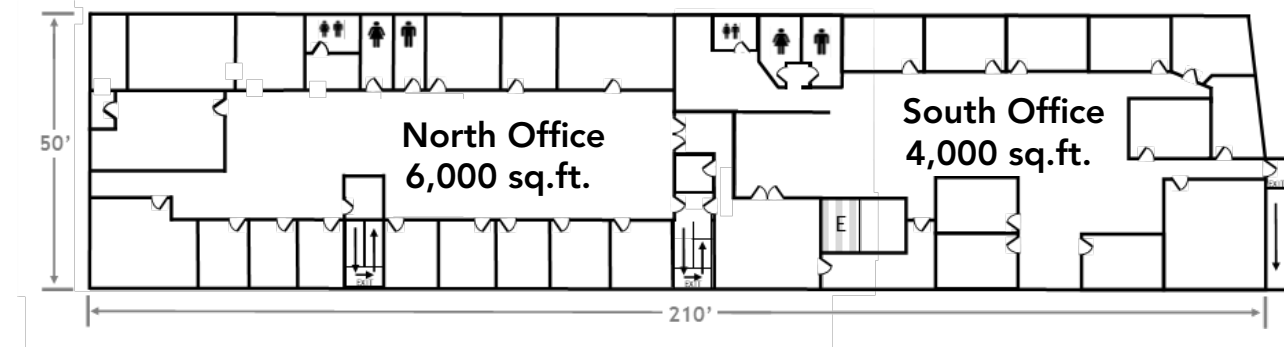
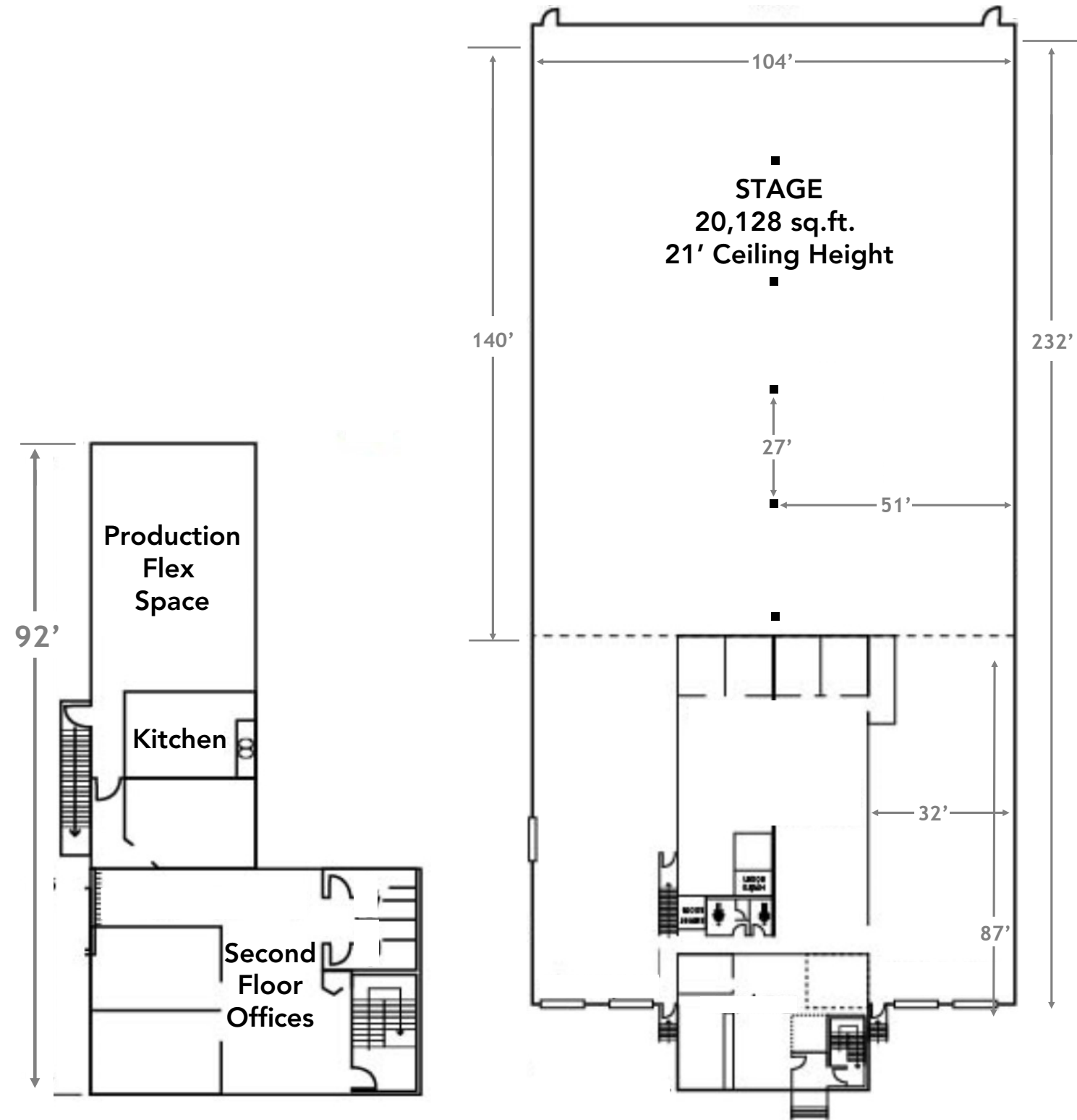


# McCONNELL STUDIOS I

4082/4084 McConnell Court  
Burnaby, BC V5A 3L8



4084 McConnell  
Offices

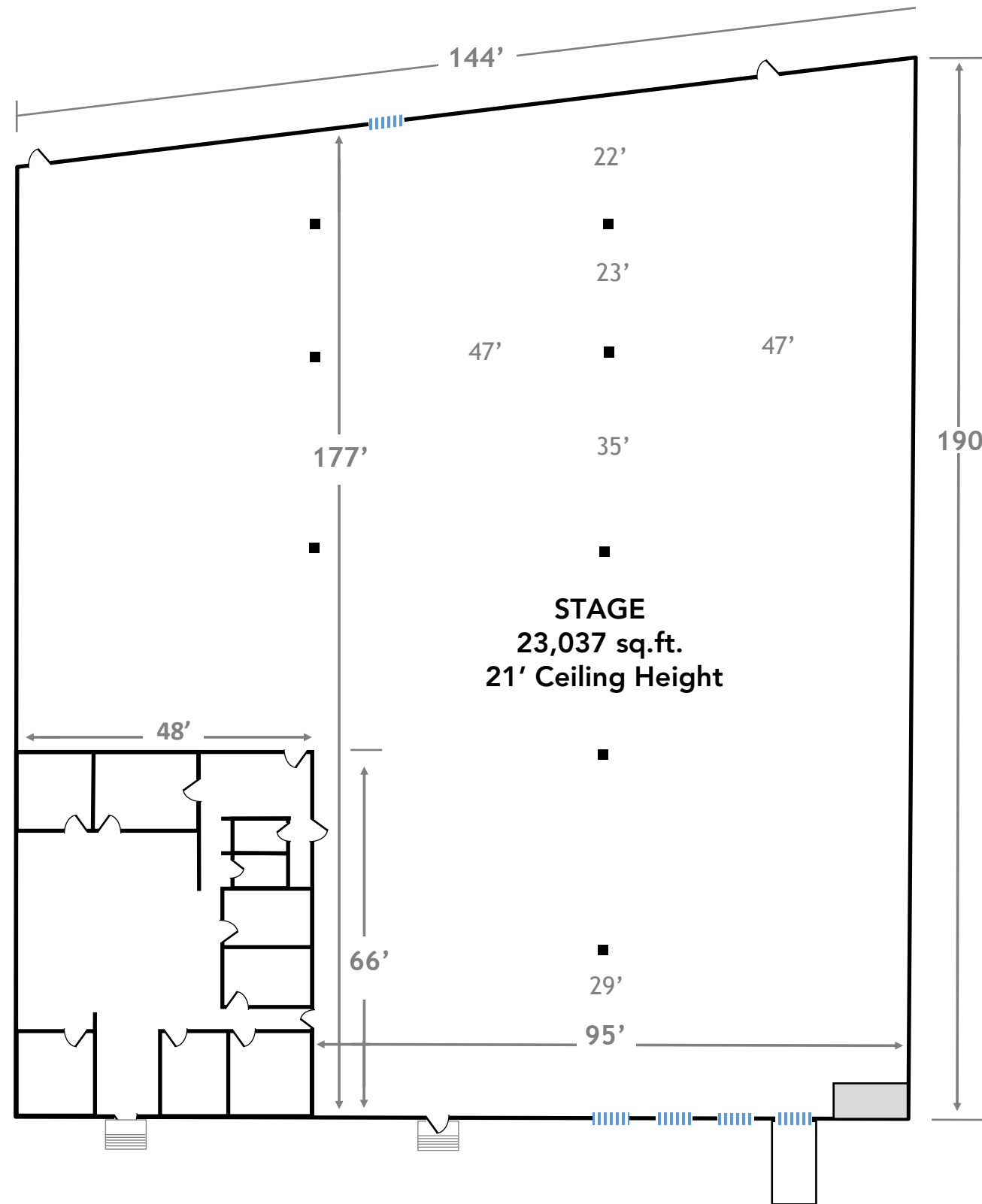


## 37,803 SQ. FT. TOTAL

- Stage Space: 20,128 sq. ft.
- Offices: 10,000 sq. ft.
- Support Space: 7,675 sq. ft.
- 1 Grade Loading Bay
- 4 Raised Loading Bays
- Power: 400 amp / 600 volts
- Bell & Light System
- 2 Electrical Vehicle Chargers**

# McCONNELL II STUDIOS

4091 McConnell Court  
Burnaby, BC V5A 3L8



## 26,207 SQ. FT. TOTAL

Stage Space: 23,037 sq. ft.  
Office: 3,170 sq. ft.  
1 Ramp Loading Bay  
4 Raised Loading Bay  
Power: 3 x 400 amp switches  
(120/208 3 phase)  
Bell & Light System